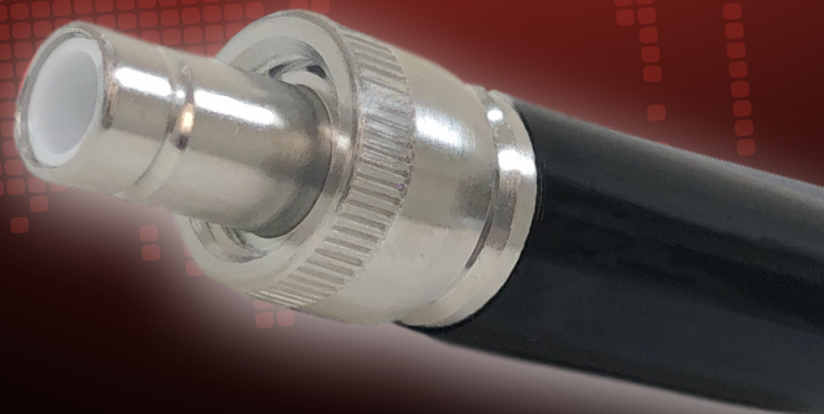


NEW PRODUCT BULLETIN 668

Z SERIES DC POWER PLUGS



Switchcraft[®]
CONXALL[®]

HARSH ENVIRONMENT CONNECTIVITY SOLUTIONS

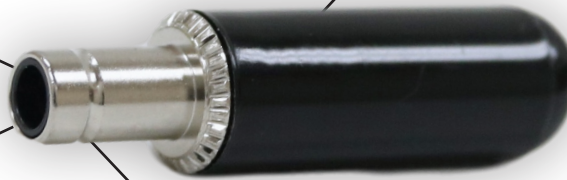
Recessed center contact for "first make, last break" ground connection

Optional "high temp" material is suitable for temperatures up to 105°C and rated for up to 7.5A current carry capacity

Larger cable clamp accommodates cables up to 0.210" [5.3mm] and improves strain relief

Touch proof/ scoop proof design for added safety

Groove for improved retention



NEW IMPROVED DESIGN

AS THE LEADING US MANUFACTURER of DC power jacks and plugs, Switchcraft's power plugs have been trusted for decades in a wide variety of critical applications. This new design takes the proven design of the original and improves on it to make it safer and more versatile. New "Z" series power plugs from Switchcraft are available in a variety of sizes and compatible with standard DC power jacks.



**BACKWARDS
COMPATIBLE**

This new and improved design is compatible with the same jacks from Switchcraft and other manufacturers as our original design



**IMPROVED
SAFETY**

Touch proof/ scoop proof design which engages the ground connection first protects the user and the equipment better than a standard power plug



**SWITCHCRAFT
QUALITY**

These new plugs are built in the same Chicago factory to the same high quality standard as our original design

SPECIFICATIONS

Lifecycles: 5,000 cycles min

Current: 5A (Standard),
7.5A (High-temp)

Voltage: 24 VDC

Cable Range: 3.2 mm - 5.3mm

Current Carry Only

Molded Cable Assembly
Options Available

CENTER PIN DIAMETER:	STANDARD INSULATOR				HIGH-TEMP INSULATOR	
	2.5MM	2.1MM	2.0MM	1.3MM	2.5MM	2.0MM
Non-Locking	760Z	762Z	S760Z	860Z	760HZ	S760HZ
Locking (Short Barrel)	760KZ	762KZ	S760KZ		760KHZ	S760KHZ
Locking (Long Barrel)	761KZ	767KZ	S761KZ		761KHZ	S761KHZ