



## NEW PRODUCT BULLETIN 628

# EH SERIES MODULAR PANEL CONNECTORS

USB 3.0  
MINI DISPLAYPORT  
CAT 6A RJ45  
USB A FEEDTHRU



**Switchcraft**<sup>®</sup>  
**CONXALL**<sup>®</sup>

HARSH ENVIRONMENT CONNECTIVITY SOLUTIONS

## NEW OPTIONS

**USB 3.0 to  
Micro USB 3.0**



EHUSB3ACAB

**Micro USB 3.0 to  
USB 3.0**



EHUSB3CABA

**Mini Displayport  
Feedthru**



EHMDP2

**CAT 6a RJ45  
Feedthru**



EHRJ45P6AS (shielded)  
EHRJ45P6A (unshielded)

**USB A to A  
Feedthru (2.0)**

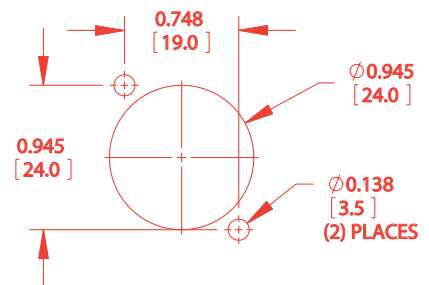


EHUSBAAB (black)  
EHUSBAA (nickel)

## KEY FEATURES

- All EH Series connectors fit universal "XLR style" panel cutout
- Mounted in impact resistant plastic housing
- Designed, assembled and inspected in the USA
- Also available individually bagged with mounting screws (add "PKG" to end of part number)
- Rack mount panels also available from Switchcraft

## RECOMMENDED PANEL CUTOUT



## RELATED PRODUCTS

**USB B to  
USB A (2.0)**



EHUSBBAB (black)  
EHUSBBA (nickel)

**USB A to  
USB B (2.0)**



EHUSBABB (black)  
EHUSBAB (nickel)

**9-Pin D-Sub  
Feedthru**



EHHD9FFB (black)\*  
EHHD9FF (nickel)\*

**15-Pin D-Sub  
Feedthru**



EHHD15MFB (black)\*  
EHHD15MF (nickel)\*

**HDMI  
Feedthru**



EHHDMI2B (black)  
EHHDMI2 (nickel)

\*replace *M* or *F* in part number for male or female contacts, respectively. All combinations available.

