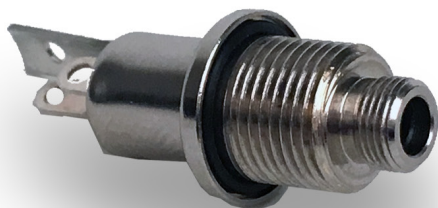




3.5MM PANEL MOUNT STEREO JACKS

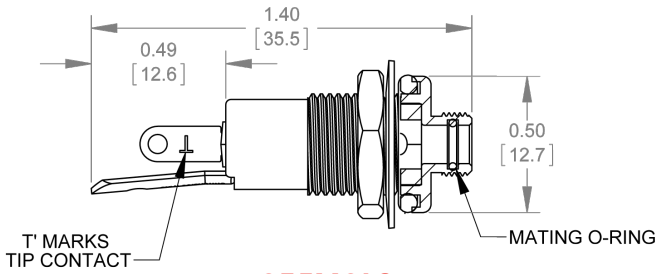
SEALED
FLUSH MOUNT
STANDARD



Switchcraft[®]
CONXALL[®]

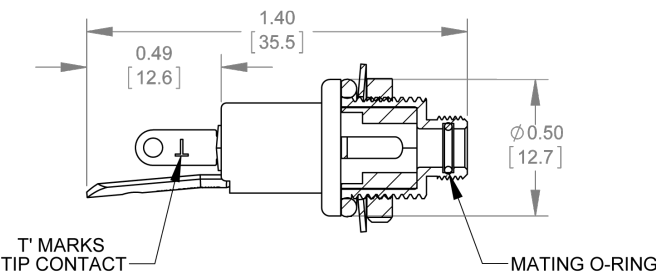
HARSH ENVIRONMENT CONNECTIVITY SOLUTIONS

LOCKING



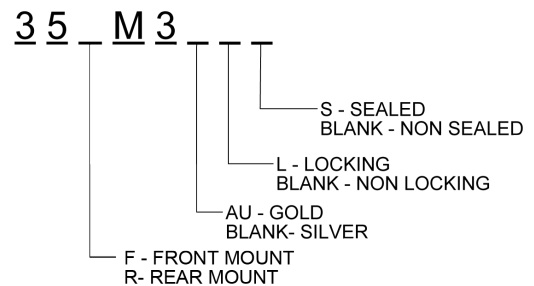
35FM3LS

- Mates with any standard 3.5mm plug
- Sealed to IP66 when mated
- Threaded bushing for use with locking plugs
- Rated for 5,000 insertions/ withdrawals minimum
- 3 conductor open circuit
- Durable nickel plated copper housing
- High quality beryllium copper contacts
- Front or rear mount styles available

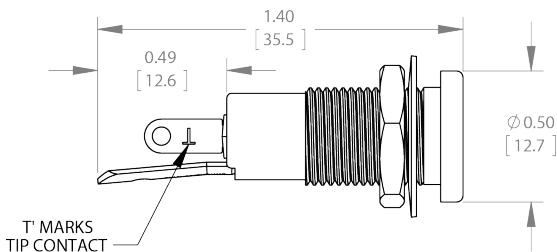


35RM3LS

Part Number Logic



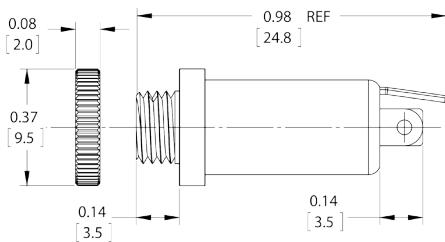
FLUSH MOUNT



35FM3

- Mates with any standard 3.5mm plug
- Front mount design mounts flush with panel
- Rated for 5,000 insertion/ withdrawals minimum
- 3 conductor open circuit
- Durable nickel plated copper housing
- Silver plated Beryllium Copper contacts
- Also available sealed (add "S" to part number)

COMPACT REAR MOUNT



35PRM3

- Mates with any standard 3.5mm plug
- Compact design
- 3 conductor open circuit
- Nickel plated brass housing
- Nickel plated brass contacts

