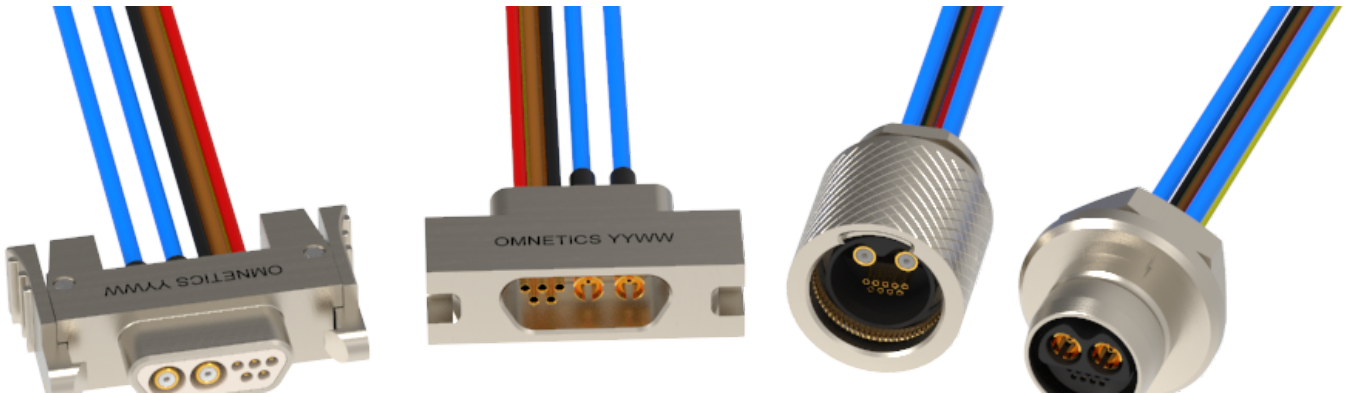
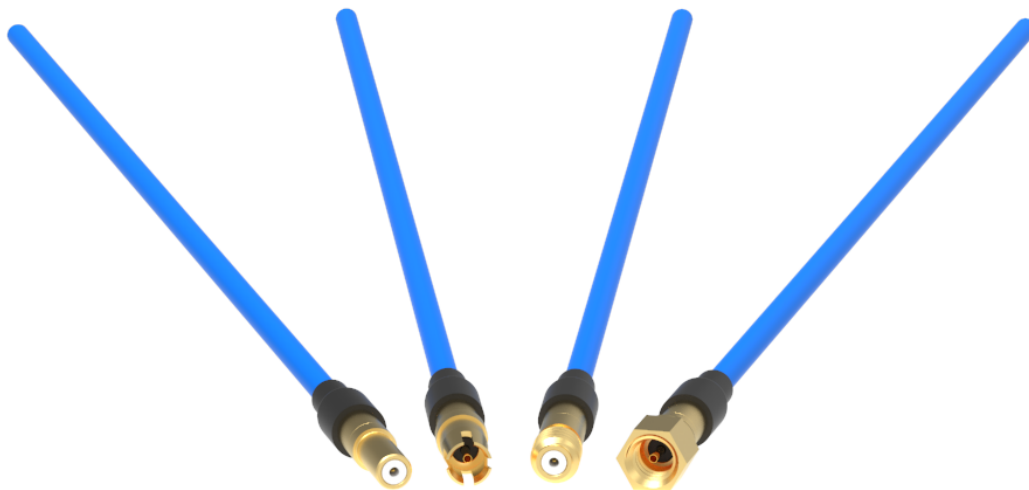


Nano Coax Connectors



Omnetics Nano Coax contacts are available either in a Hybrid Micro-D or as a standalone contact. The Hybrid Micro-D offers a variety of coax/signal configurations to provide the greatest flexibility in circuit design while ensuring that the connector is kept to the minimum necessary size. The standalone version provides optimal performance in one of the lowest form factors on the market. The Nano Coax contacts are designed to be terminated to a low-loss 29 AWG (.047") 50 Ω coax cable. The coax contacts are available in Cable-to-Cable, Edge Launch, or Through Hole termination types.



TESTS/REPORTS:

Nano Coax RF Characterization Test Report – Board Mount (</Portals/0/Files/Test Reports/T160114Rev2.pdf?ver=2018-07-18-114941-667>)

Nano Coax RF Characterization Test Report – Cabled (</Portals/0/Files/Test%20Reports/T160110Rev3.pdf?ver=2018-07-18-114941-667>)

Nano Coax Shock & Vibration Test Report (</Portals/0/Files/Test Reports/T217238-1-web-Shock-Vibe-Nano-Coax.pdf?ver=2018-07-18-114941-663>)

CABLE SPECIFICATIONS:

MECHANICAL SPECIFICATIONS:

Shock	100 g's with no discontinuities > 1 μ s
Vibration	15 g's with no discontinuities > 1 μ s
Operating Temperature	-55°C to 125°C
Humidity	EIA-364-3 I, Test Cond A Omit Steps 7A & 7B
Durability	2000 mating cycles minimum

MATERIAL SPECIFICATIONS:

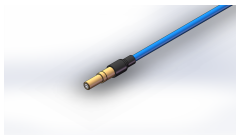
Contact	Copper Alloy per MIL-DTL-83513
Contact Finish	Gold per ASTM B488, Type II, Class 1.27, Code C Over Nickel Underplate

ELECTRICAL SPECIFICATIONS:

Contact Type		Cable-to-Cable		Edge Launch		Through Hole	
Frequency Range		DC to 20 GHz		DC to 20 GHz		DC to 10 GHz	
		Gated	Non-Gated	Gated	Non-Gated	Gated	Non-Gated
VSWR	DC-10 GHz	1.2:1	1.3:1	1.1:1	1.3:1	1.3:1	1.55:1
	10-20 GHz	1.25:1	1.4:1	1.3:1	1.6:1	N/A	N/A

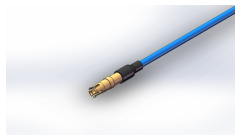
Return Loss	DC-10 GHz	-27 dB	-16 dB	-23 dB	-19 dB	-15 dB	-13 dB
	10-20 GHz	-25 dB	-15 dB	-19 dB	-13 dB	N/A	N/A
Insertion Loss	DC-10 GHz	-0.7 dB	-1.7 dB	-0.7 dB	-1.5 dB	-2.0 dB	-2.9 dB
	10-20 GHz	-1.0 dB	-2.3 dB	-1.9 dB	-3.0 dB	N/A	N/A
Impedance	TR=100ps	50 Ω ± 2.5 Ω		50 Ω ± 2.5 Ω		50 Ω ± 5 Ω	

A75588-001



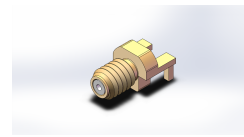
- Type: Pin
- Male Push On Cable
- CXP-01-WC-18.0-NMP

A75589-001



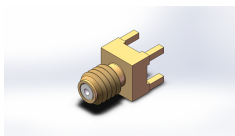
- Type: Socket
- Female Push On Cable
- CXS-01-WC-18.0-NMP

A75590-001



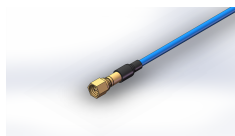
- Type: Pin
- Male Twist On Edge Launch
- CXP-01-AA-NMA

A75592-001



Type: Pin
Male Twist On Vertical Mount
CXP-01-DD-NMA

A75593-001



Type: Socket
Female Twist On Cable
CXS-01-WC-18.0-NMA