



# MICRO-D CONNECTOR SAVER (TYPE Z)

Omnetics' **Dual Row Connector Savers** preserve connectors installed in complex critical systems in the military, aerospace, and harsh-environment industries where interconnects experience frequent disconnection for testing and other service disruptions. Our solution extends the lifespan of high-reliability connectors with the same precision design we integrate into all of our termination products. This cost-effective, user-friendly, and rugged utility product helps protect installed connectors from damage or wear. It is available in a wide range of options and configurations to match your system's needs.



## Electro-Mechanical Specifications

TYPE	PERFORMANCE
Durability	> 2000 Mating Cycles min
Temperature	-55°C to +125°C (200 °C w/HTE)
Current rating	3 Amps per contact per MIL-DTL-83513
Voltage Rating (DWV)	600 VAC RMS Sea Level
Insulation Resistance	5,000 Megohms @ 500 VDC
Shock	50 g's with no discontinuities > 1 microsecond
Vibration	20 g's with no discontinuities > 1 microsecond
Thermal Vacuum Outgassing	1.0% max TML, 0.1% max CVCM - NASA SP-R-0022
Contact Resistance	26 milliohms (65 mV) max @ 2.5 Amps per MIL-DTL-83513
Mating/Unmating Force	3 oz. (.85g) typical per contact

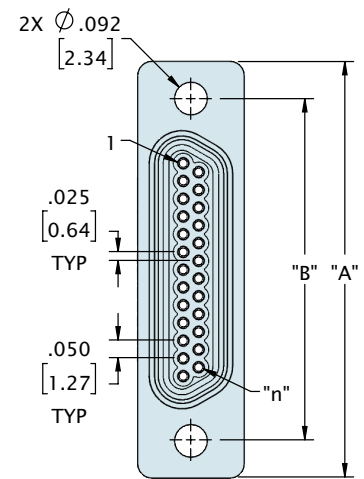
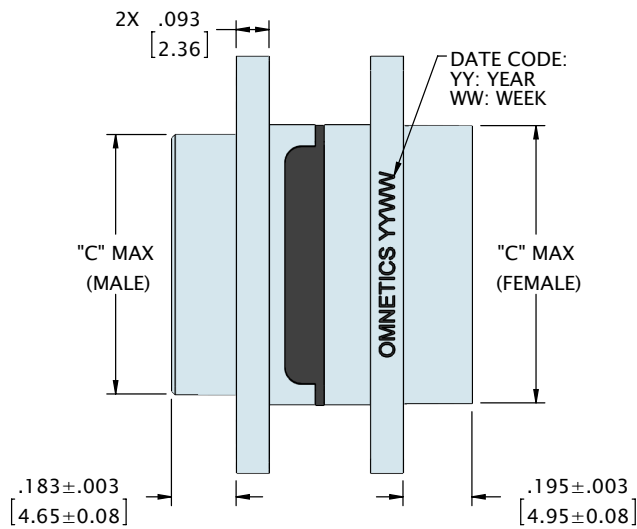
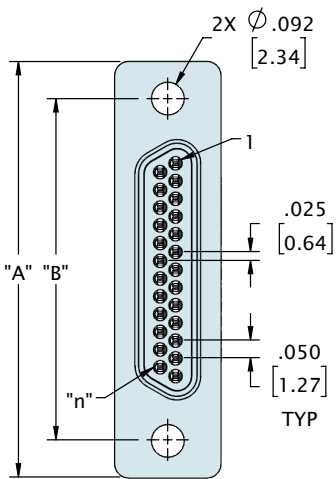
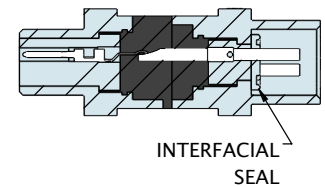
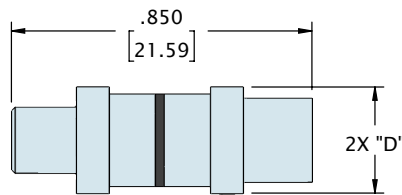
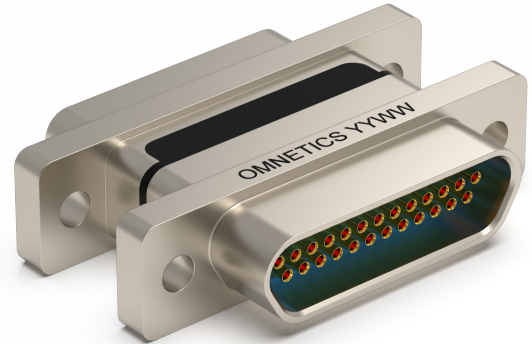
## Material Specifications

TYPE	PERFORMANCE
Contact	Copper Alloy Per MIL-DTL-83513
Contact Finish	Gold per ASTM B488, Type II, Class 1.27, Code C Over Nickel Underplate
Insulator	Thermoplastic per MIL-DTL-83513
Interfacial Seal	Silicone Elastomer per A-A-59588
Hardware	Stainless Steel, 300 Series, Passivated per SAE AMS-2700

## Shell Options

MATERIAL	FINISH
Aluminum 6061	Electroless Nickel per SAE-AMS-2404
Stainless Steel, 300 Series	Passivated per SAE-AMS-2700

## METAL SHELL MICRO-D CONNECTOR SAVER

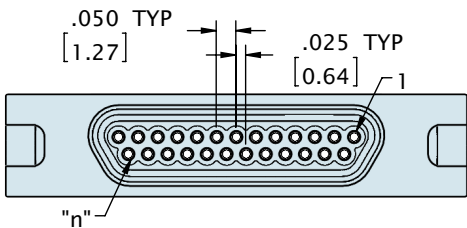
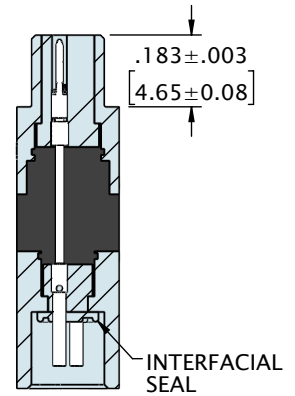
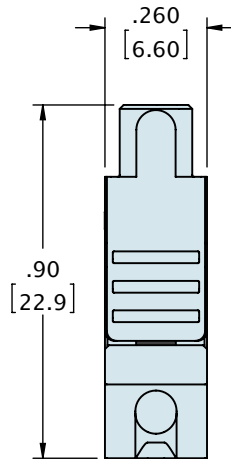
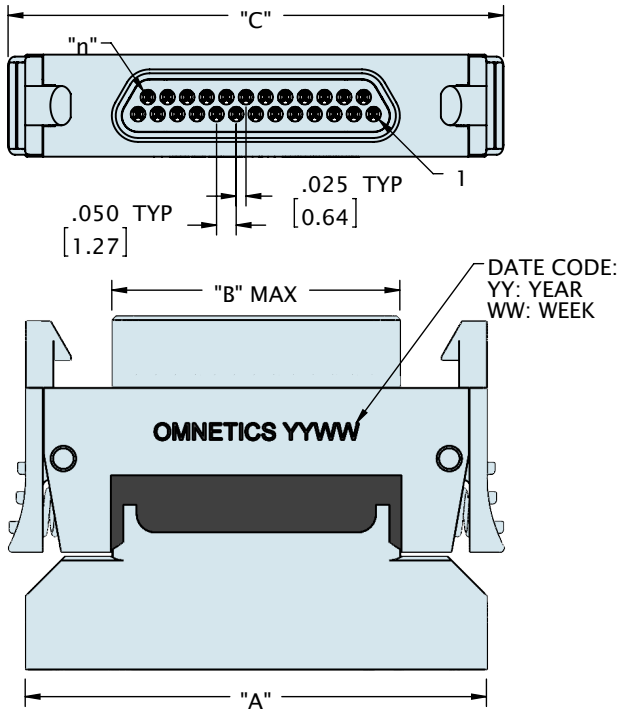
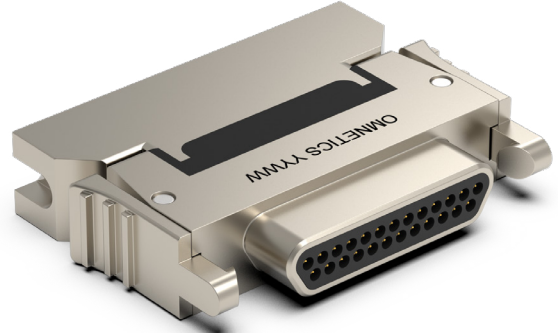
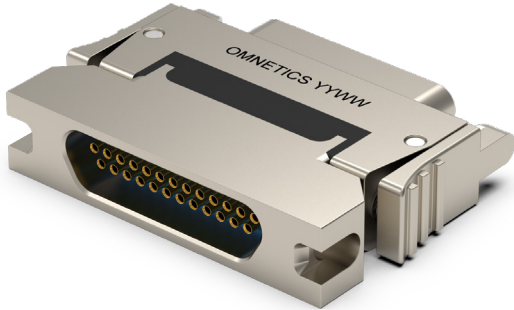


CONTACTS	ROWS	"A"	"B"	"C" (MALE)	"C" (FEMALE)	"D"
9	2	.775 [19.69]	.565 [14.35]	.334 [8.48]	.400 [10.17]	.260 [6.60]
15	2	.925 [23.50]	.715 [18.16]	.484 [12.29]	.550 [13.98]	.260 [6.60]
21	2	1.075 [27.31]	.865 [21.97]	.634 [16.10]	.700 [17.79]	.260 [6.60]
25	2	1.175 [29.85]	.965 [24.51]	.734 [18.64]	.800 [20.33]	.260 [6.60]
31	2	1.325 [33.66]	1.115 [28.32]	.884 [22.45]	.950 [24.14]	.260 [6.60]
37	2	1.475 [37.47]	1.265 [32.13]	1.034 [26.26]	1.100 [27.95]	.260 [6.60]
51	2	1.825 [46.36]	1.615 [41.02]	1.384 [35.15]	1.450 [36.84]	.260 [6.60]
51	3	1.425 [36.20]	1.215 [30.86]	.984 [24.99]	1.050 [26.68]	.300 [7.62]

DIMENSIONS IN [ ] ARE IN MILLIMETERS AND ARE FOR REFERENCE ONLY

# MICRO-D CONNECTOR SAVER (TYPE Z)

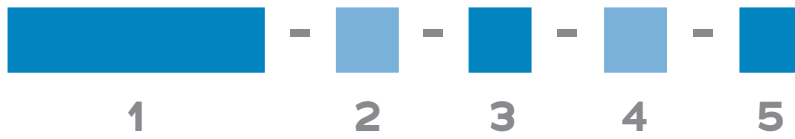
## LATCHING MICRO-D CONNECTOR SAVER



CONTACTS	ROWS	"A"	"B"	"C"
9	2	.775 [19.69]	.334 [8.48]	.09 [2.2]
15	2	.925 [23.50]	.484 [12.29]	1.01 [25.7]
21	2	1.075 [27.31]	.634 [16.10]	1.16 [29.5]
25	2	1.175 [29.85]	.734 [18.64]	1.26 [32.0]
31	2	1.325 [33.66]	.884 [22.45]	1.41 [35.8]
37	2	1.475 [37.47]	1.034 [26.26]	1.56 [39.6]
51	2	1.825 [46.36]	1.384 [35.15]	1.91 [48.5]

DIMENSIONS IN [ ] ARE IN MILLIMETERS AND ARE FOR REFERENCE ONLY

## ORDERING GUIDE



<b>1 Series</b>	<b>MMDZ</b> Dual Row Connector Saver	<b>LMDZ</b> Latching Dual Row Connector Saver
<b>2 Number of Contacts</b>	<b>O09</b> <b>O15</b> <b>O21</b> <b>O25</b> <b>O31</b> <b>O37</b> <b>O51*</b>	
	* Use <b>512</b> for Two Rows <b>O51</b> and <b>513</b> for Three Rows <b>O51</b> ( <b>513</b> is for Dual Row only)	
<b>3 Shell Material &amp; Finish</b>	<b>N</b> Aluminum Shell, Electroless Nickel Plated	<b>CD</b> Aluminium Shell, Cadmium Plated
	<b>B</b> Aluminium Shell, Black Anodized	<b>P</b> Stainless Steel Shell, Passivated
<b>4 Common Options</b>	<b>HT</b> High Temp Epoxy	<b>RH</b> RoHS Compliant
<b>5 Special Instructions</b>	<b>YYY</b> Describe anything that is not covered in standard options	