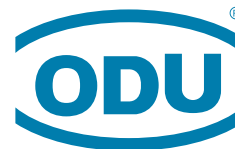


A PERFECT ALLIANCE.



ODU-MAC[®] HOUSING VARIETY

The flexible way to your individual connection



ODU-MAC[®]

MANUAL
MATING,
AS EASY
AS SAFE





THE UNIQUE SPINDLE LOCKING FROM ODU COMBINES PRECISION AND ERGONOMY IN COMPACT DESIGN - LONG SINCE PROVEN IN ITS VARIOUS APPLICATION AREAS.

STRAIN RELIEF HOUSING **Silver-Line**

The ODU-MAC® strain relief housing has been specifically developed to meet the high demands of our ODU-MAC® interfaces. It's an ideal add-on solution for our successful docking frames, offering full protection for the termination area.



- + An accessory for all ODU docking frame solutions
- + Meets protection class IP 50 or higher
- + Robust and space-saving design
- + Individual lengths and cable entry placement for high flexibility
- + Optional PCB board fixing

IP 68/69 HOUSING

For interfaces that need special protection and shielding against electromagnetic fields. Housing construction according to IEC 61373:2010 (VDE 0115-106:2011) Cat. 2 (bogie) from rail engineering.

- + For applications with extreme requirements
- + Screw locking / pressure tightness >5 bar
- + 360° EMC shielding according to VG 95373-41:1997
- + Improved corrosion resistance



White-Line

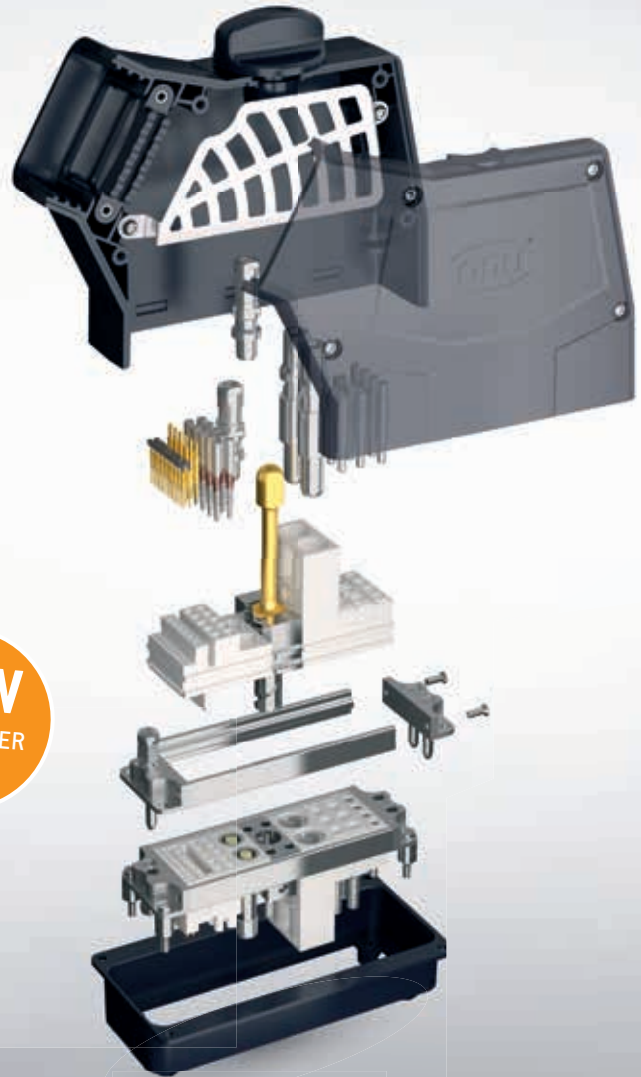
Blue-Line

SPINDLE LOCKING

White-Line

Blue-Line

- + Ergonomic quick lock system
- + Space-saving design for tight assembly space
- + Robust plastic and metal housings
- + High mating cycles (>30,000)
- + Protection class IP 50 / 65



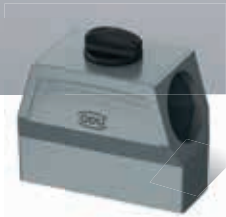
NEW
2ND QUARTER
2018

THE 2-SHELL HOUSING

- Very easy assembling thanks to its „half-shell principle“
- Optional grid metal sheets allow bundling and strain relief of single strands
- Flexible adaptable cable entry
- Protection class IP 4X



CABLE HOOD
with side cable entry



XXL-HOUSING
with side cable entry



BULKHEAD MOUNTED HOUSING



SURFACE MOUNTED HOUSING

Available housing colours:



PLASTIC

METAL

Further housing types available on request.



CABLE HOOD
with side cable entry



BULKHEAD MOUNTED HOUSING



SURFACE MOUNTED HOUSING

Find more information and housing types on our website:
www.odu-connectors.com



LEVER LOCKING

White-Line

Blue-Line

TRANSVERSE LOCKING:

- + Space-saving locking, stackable sidewise
- + Two-handed safety operation (>5,000 mating cycles)
- + Locking lever can be changed easily
- + Efficient locking option in light and robust plastic model
- + Protection class IP 65



LEVER LOCKING:

- + Merchantable locking (>5,000 mating cycles)
- + Highest variant diversity
- + Protection class IP 65

HIGH RELIABILITY TO:



COLDNESS



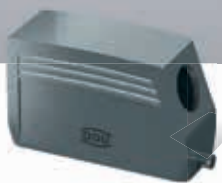
HEAT



VIBRATION



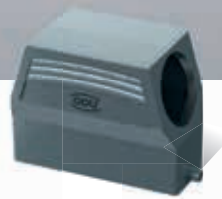
CERTIFIED IP PROTECTION



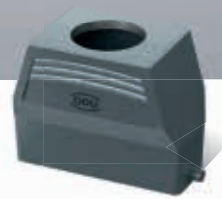
CABLE HOOD
with side cable entry



CABLE HOOD
with top cable entry



XXL-HOUSING
with side cable entry



XXL-HOUSING
with top cable entry



BULKHEAD MOUNTED
HOUSING



SURFACE MOUNTED
HOUSING



CABLE TO CABLE HOOD



CABLE HOOD
with side cable entry



BULKHEAD MOUNTED
HOUSING



SURFACE MOUNTED
HOUSING

ZERO THE DYNAMIC MINI-PLASTIC HOUSING

White-Line



Need a space-saving hybrid connector which can combine several different media? The ZERO from the ODU-MAC® product series is your ideal choice. Its symmetric housing geometry enables a generous range – up to 9 units – of signals, power, data-rate and coax modules. In place of an aluminum frame, the plastic housing parts have integrated rails, making the use of magnetic components no longer necessary.

- + Up to 60,000 mating cycles
- + Compact lightweight design
- + Non-magnetic versions



0°

CABLE ENTRY



45°

CABLE ENTRY



90°

CABLE ENTRY



NON-MAGNETIC



SNAP-IN LOCKING

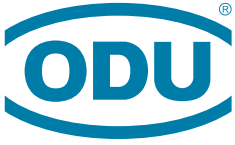
- As reliable as easy, thanks to snap fits and sealing strip (frictional locking principle)
- Low mating/demating forces [approx. 7 N for the housing] guarantee quick connection demating (Break-Away function / emergency release)



ACCESSORIES

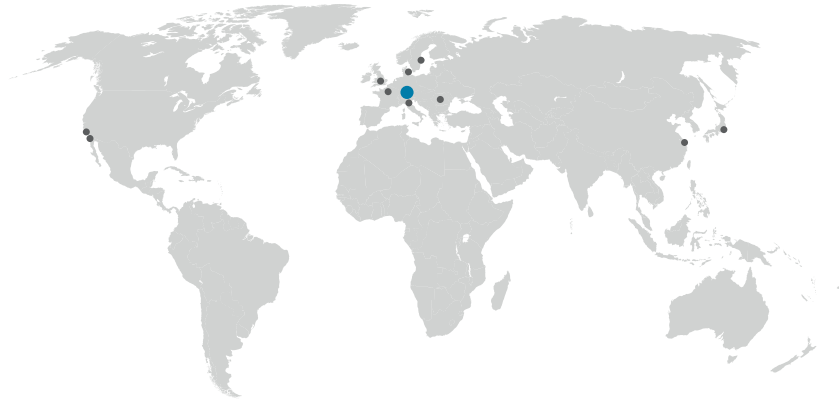
For all ODU-MAC® products ODU guarantees extensive accessories. Choose from various protection covers, cable clamps, reducing rings as also blind grommets, adapter rings, cable bend reliefs and locknuts.





A PERFECT ALLIANCE.

ODU GROUP WORLDWIDE



HEADQUARTERS

ODU GmbH & Co. KG

Pregelstraße 11, 84453 Mühldorf a. Inn, Germany
Phone: +49 8631 6156-0, Fax: +49 8631 6156-49, E-mail: zentral@odu.de

SALES SUBSIDIARIES

ODU Denmark ApS

Phone: +45 2233 5335
E-mail: sales@odu-denmark.dk
www.odu-denmark.dk

ODU Japan K.K.

Phone: +81 3 6441 3210
E-mail: sales@odu.co.jp
www.odu.co.jp

ODU-UK Ltd.

Phone: +44 330 002 0640
E-mail: sales@odu-uk.co.uk
www.odu-uk.co.uk

ODU France SARL

Phone: +33 1 3935-4690
E-mail: odu@odu.fr
www.odu.fr

ODU Scandinavia AB

Phone: +46 176 18262
E-mail: sales@odu.se
www.odu.se

ODU-USA, Inc.

Phone: +1 805 484-0540
E-mail: sales@odu-usa.com
www.odu-usa.com

ODU Italia S.R.L.

Phone: +39 331 8708847
E-mail: sales@odu-italia.it
www.odu-italia.it

ODU (Shanghai)

International Trading Co., Ltd.
Phone: +86 21 58347828-0
E-mail: oduchina@odu.com.cn
www.odu.com.cn

Further information and specialized representatives can be found at:

www.odu-connectors.com/contact

PRODUCTION SITES

Germany Otto Dunkel GmbH
China ODU (Shanghai) Connectors Manufacturing Co. LTD
Mexico ODU Mexico Manufacturing S.R.L. de C.V.
Romania ODU Romania Manufacturing S.R.L.
USA ODU-USA, Inc.



Simply scan the QR code
to download the entire brochure.

GRASWALD HEILIGTAC | Passau

We reserve the right to modify product and technical data.

ODU-MAC HOUSING VARIETY / B / 1117 / E