



CLARKE & SEVERN ELECTRONICS Solutions that Fit - From One Source
Ph +612 9482 1944 - Email sales@clarke.com.au - www.clarke.com.au - webshop www.cseonline.com.au



MICRO-CON-X[®] INSTA-CLICK[™] SEALED CONNECTORS



Switchcraft[®] CONXALL[®]

HARSH ENVIRONMENT CONNECTIVITY SOLUTIONS

Hundreds of configurations available up to 7 pins with a variety of options

Insta-Click™ spring loaded latching mechanism locks automatically



Available as field installable connectors or factory molded cable assemblies

Easy disconnect with a quarter turn of the coupling ring

Insta-Click™ connectors mate with special Insta-Click™ panel mount connectors

NEW PRODUCT

The Micro-Con-X® from Conxall® has set the standard for harsh environment connectors, and the new Insta-Click™ product line adds several key improvements for even harsher environment. An all-new latching mechanism provides an automatic positive lock while improving the water resistance rating to IP68 (when used as part of a molded cable assembly). A high quality new plastic offers UV resistance.

IP68
RATED WATER
RESISTANCE

The Con-X® Insta-Click™ series is sealed to IP68 for harsh environments when used with a molded cable assembly.

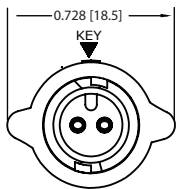
UL F1
RATED UV
RESISTANCE

A special high-PBT material provides excellent UV resistance for outdoor use and lighting applications

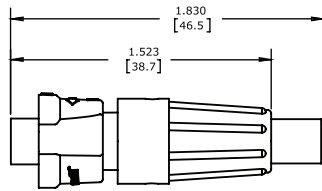

CONXALL
QUALITY

Made in USA to the high standards that have made Conxall the leading name in harsh environment connectors.

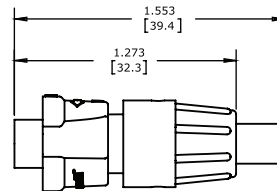
OVERALL DIMENSIONS



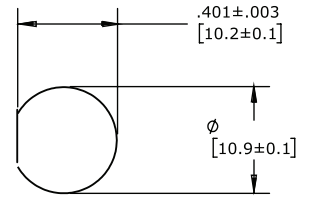
Connector Mating Face



Connector with Long Backshell

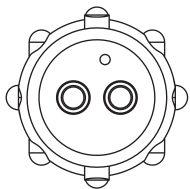


Connector with Short Backshell

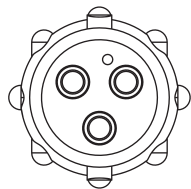


Recommended Panel Cutout

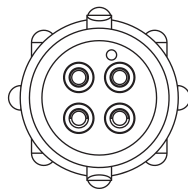
CONTACT LAYOUTS (REAR/WIRING SIDE OF PANEL SHOWN)



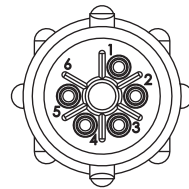
2 POSITION
#20 PIN & SOCKET CONTACT



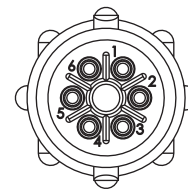
3 POSITION
#20 PIN & SOCKET CONTACT



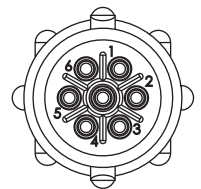
4 POSITION
#22 PIN & SOCKET CONTACT



5 POSITION B-KEY
#26 PIN & SOCKET CONTACT



6 POSITION A-KEY
#26 PIN & SOCKET CONTACT



7 POSITION B-KEY
#26 PIN & SOCKET CONTACT

ORDERING CODE

W XX X XX - X X G - P - XXX

Connector Type
16 - Cable End Plug
17 - Panel Mount
18 - Cable to Cable

Contact Size
2 - #20 (2 thru 3)
8 - #22 (4)
9 - #26 (5 thru 7)

Contact Style
80 - Crimp
81 - #20 PC Tail (Short)
82 - Solder
83 - #22 PC Tail (Short)
84 - #26 PC Tail (Short)
91 - #20 PC Tail (Medium)
92 - #20 PC Tail (Long)

of Contacts

Backshell / Cable OD
3XX - Short Backshell: in [mm]
 (2 & 3 Contacts Only)
11 - 0.09 to 0.14 [2.3 to 3.6]
15 - 0.15 to 0.17 [3.8 to 4.3]
18 - 0.18 to 0.20 [4.6 to 5.1]
5XX - Long Backshell: in [mm]
18 - 0.18 to 0.20 [4.6 to 5.1]
21 - 0.21 to 0.22 [5.3 to 5.6]
22 - 0.22 to 0.23 [5.6 to 5.8]
300 - Panel Mount
3ES - Panel Mount w/ Epoxy

Contact Type
P - Pin
S - Socket

SPECIFICATIONS

MECHANICAL:

Mating / Locking Type:	Spring activated positive lock
Life:	300 insertion/ withdrawal cycles minimum
Operating Forces:	13lb [6kg] insertion/ 9lb [4g] withdrawal max
Vibration:	Mil-Std 202G method 201A
Panel Hex Nut Torque:	10 in-lb [1.1 Nm] maximum
Cable Securing System:	Removable twist-lock backshell

ELECTRICAL:

Voltage Rating:	300 V AC/DC
Current Rating:	7.5A max for # 20contacts 5.5A max for #22 contacts 3.5A- 4A max for #26 contacts Refer to website for detailed information
Insulation Resistance:	100 MΩ minimum
Contact Resistance:	20 mΩ maximum

ENVIRONMENTAL:

Temperature Limits:	-40°C to +85°C (-40°F to +185°F)
Operating Temperature:	Refer to website for detailed information
Moisture Resistance:	Mil-Std 202G method 106G
Insulation Resistance:	Mil-Std 202G method 302 condition B
Thermal Shock:	Mil-Std 202G method 107G
Salt Atmosphere :	Mil-Std 202G method 101E condition B
Ingress Protection :	IP66, IP67, IP68 per IEC60529 (Molded cable assemblies , consult factory)

MATERIAL:

Outer Shell:	Thermoplastic
Hex Nut:	Thermoplastic
Grommet/ Strain Relief:	Elastomer, black
Gasket:	Elastomer, black
Seal O-rings:	Silicone, red
Contacts:	Copper Alloy, gold plated