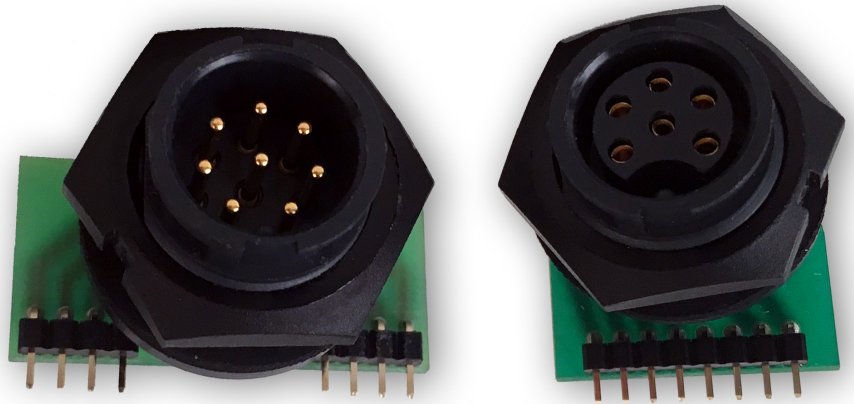


## RIGHT ANGLE PCB MOUNT MINI-CON-X [18MM OD]

NEW PRODUCT BULLETIN 625

### FEATURES & BENEFITS

- Allows for easy mounting of the connector directly to a PCB
- Both narrow and wide arrangements are available in 2 thru 8 #20 contacts (7-8 available as male only)
- Panel cutout and pin configuration, same as Mini-Con-X panel mount connectors. For more information, please visit [Switchcraft.com](http://Switchcraft.com) for detailed drawings
- Made in the USA



### APPLICATIONS

- Sealed data transmission
- GPS and asset tracking devices
- Medical Instrumentation
- General electronic applications

**Switchcraft**<sup>®</sup>  
**CONXALL**<sup>®</sup>



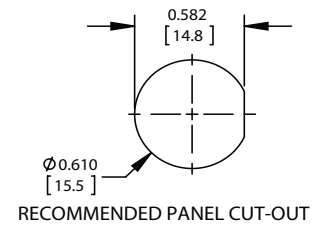
601 E Wildwood Ave | Villa Park, IL 60181 | 630.834.7504 | [sales@conxall.com](mailto:sales@conxall.com) | Made in USA  
[www.switchcraft.com](http://www.switchcraft.com)

**XXXX** - **X X** **G - 300**

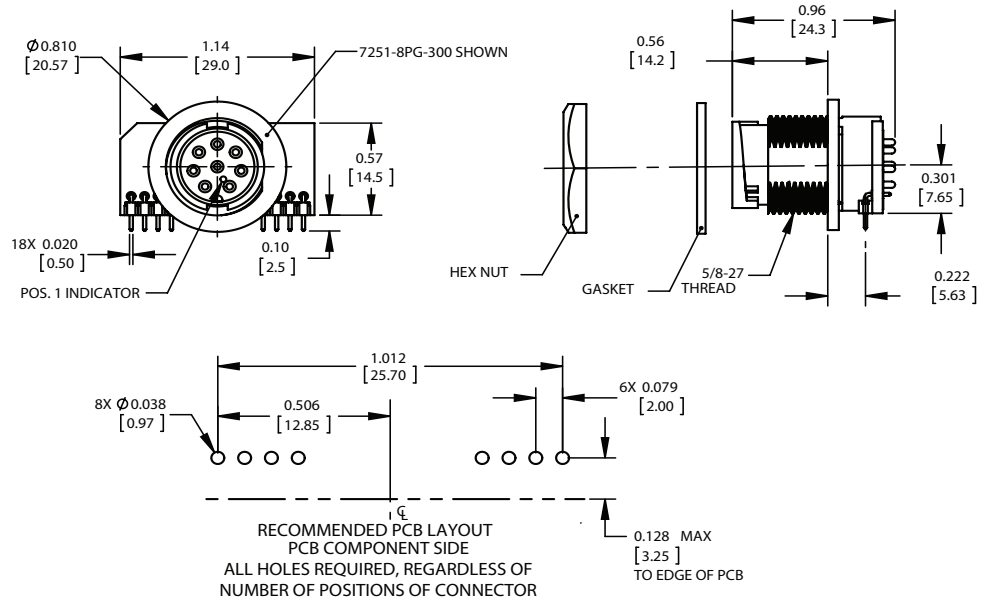
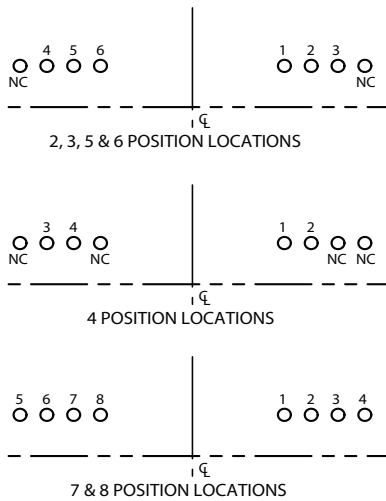
Board Size  
**7251** - Wide  
**7261** - Narrow

# of Contacts:  
**2-6** - Male or Female  
**7-8** - Male Only

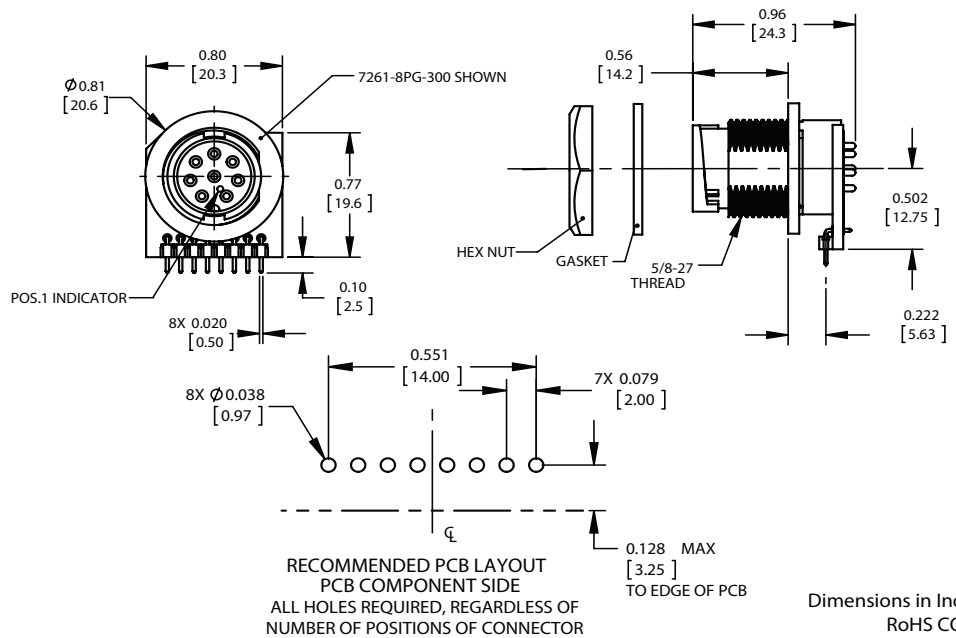
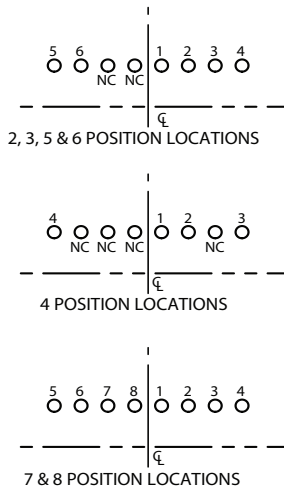
Gender:  
**P** - Male  
**S** - Female



### WIDE VERSION



### NARROW VERSION



Dimensions in Inches [mm]  
 RoHS COMPLIANT

